



Asphalt Art® is a printable, commercial grade slip resistant white foil based media that has been designed to meet OSHA standards for general purpose anti-slip surface applications. Asphalt Art maintains both NFSI and ASTM D-2047 certifications for non slip surfaces. Asphalt Art only recommends the use of UV Curable and Latex inks and printers.

Applications:

Asphalt Art® is designed for outdoor advertising and promotional applications that require short to long term anchorage to a wide variety of surfaces including asphalt and concrete. It has been successfully used in a wide range of industries including retail, OEM, Action Sports, Building Safety, etc.

Properties

Thickness PSTC - 133
Substrate: 0.020 inch (0.508 mm)
Pressure Sensitive adhesive: 0.003 inch (0.076 mm)
Release Liner: 0.006 inch (0.152 mm)

Peel Adhesion to: PSTC – 101

Stainless Steel: 15 minute dwell, 80 oz/in (88 N/100 mm)
24 hour dwell, 100 oz/in (110 N/100 mm)
Powder coated surfaces *: 15 minute dwell, 70 oz/in (77 N/100 mm)
24 hour dwell, 80 oz/in (88 N/100mm)
Polyethylene: 15 minute dwell, 50 oz/in (55 N/100 mm)
24 hour dwell, 60 oz/in (66 N/100 mm)

Shear Adhesion to: PSTC – 107
Stainless Steel: 1/2" x 1/2" x 1000g, 5 hours

Tack: PSTC - 6
Rolling Ball Tack, < 5 inches

Coefficient of Friction: ASTM D1894

Dry Rubber: 0.9
Wet Rubber: 0.8
Dry Leather: 0.6
Wet Leather: 0.9

Service Temperature: PSTC – 107
High: 14 days at 220°F, No Visible effects
Low: 14 days at -20°F, No Visible effects

Temperatures:

Product should be stored at room temperature.
Stored temp not to exceed 130F.
Recommended application temperature : 50-100F
Recommended application humidity: Under 80% RH.

Chemical Properties:

Solvent Resistance

Product laminated to stainless steel panel and allowed to condition for 24 hrs at room temperature before testing. Sample was covered with reagent to the point that edges of product are also exposed to the reagent. The product is exposed to reagent for 1 hour at room temperature then reagent is removed and product is immediately tested for scrape resistances, delaminating, and other visual effects.

Water	Recommended
10% Salt Water	Recommended
Bleach	Recommended
Trichloroethylene	Not Recommended
25% Sulfuric Acid	Intermittent Contact Only
1% Sodium Hydroxide	Intermittent Contact Only
Unleaded Gasoline	Recommended
Diesel Fuel	Recommended
Hydraulic Fluid	Recommended
50% Antifreeze in water	Recommended
MEK	Not Recommended
Mineral Spirits	Recommended
99% IPA	Recommended

* Color and lot variances of coated surfaces including paints, powder coatings, lacquers, stains, and other treatments may vary the performance of the tape and should be evaluated for the compatibility of the tape to the specific surface.



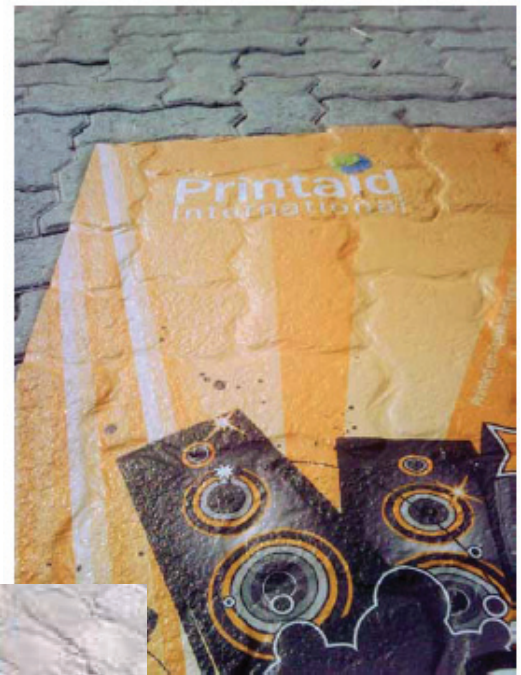
To order call:
(800)552-9427
www.qmls.com
info@qmls.com
fax (203)281-6451



Asphalt Art transforms ordinary ground and surface materials such as asphalt, concrete and untreated stone in to stunning, vibrant advertising canvases. Unlike standard laminated vinyl floor decals, Asphalt Art's patented aluminum substrate technology is extremely durable and does not de-laminate. Asphalt Art withstands tough treatment such as automobile traffic and can be easily removed, usually without any leftover residue. Since Asphalt Art literally conforms and adheres to any porous textured surface, it is very slip resistant, making it perfect for use on stairs and floors anywhere. With all of the advantages of Asphalt Art and all of the locations that it can be used, only one question remains... Where will you display your next advertising masterpiece?

Asphalt Art®

Catalog #	Size
AAFLOOR01-U	48"x100'
AAFLOOR01-U-10	48"x30'



Information provided here is based on research and is believed to be reliable as of printing date. This information does not constitute a warranty. All material should be tested by purchaser to determine final suitability. Quality will not be held responsible for customers end use of product. Quality is available for directions and advice as to proper use and application of our products.

To order call:
(800)552-9427
www.qmls.com
info@qmls.com
fax **(203)281-6451**