



# Asphalt Art® Application Instructions

**Thank you for choosing Asphalt Art for your advertising job. Asphalt Art is a great eye catcher and it is extremely slip resistant. Asphalt Art is very user friendly. It is compatible with UV- curable and Latex inks. No lamination is needed and no additional surface treatment is recommended. Furthermore, it is easily cut into the shape you like with any sharp utility knife, flat bed cutter or dye cutting machine.**

## Handling Instructions During Printing

Because Asphalt Art is an aluminium foil based product and foil tends to hold its shape, care should be taken when handling the product prior to printing. Pay special attention to the edges during loading. If edge lift occurs use a roller to gently flatten out the edges.

## Where to apply

Asphalt Art is especially designed to work on surfaces that are usually found outdoors, but can easily be used indoors as well.

- asphalt (rough or smooth)
- stone (untreated)
- cement
- and many other surfaces – if you are not sure then try it on a little corner of a surface or contact us for support



The surface does not need to be smooth as Asphalt Art is a flexible substrate that adjusts to uneven surfaces:

## Additional Data

- Asphalt Art recommends application of product within (1) year from date of purchase.
- Product should be stored at room temperature. Stored temp not to exceed 130°F (54°C)
- Recommended application temperature : 50-100°F (+10°-30°C) o At temperatures below 50°F (10°C), surface can be pretreated with a gas burner
- Recommended application humidity: Under 80% RH.
- Adhesive type: High Performance PSA

## Anti-Slip & Fire Certifications

- National Floor Safety Institute
- ASTM D-2047
- Euro-Norm
- Slip-resistance DIN51130 / BGR 181 R10
- Certificate flame resistance DIN 4201 B1
- according to norm NF P92- 503 (Dec. 1995) M1
- Certificate smoke emission/toxins F2
- according to norm NF F 16-101 (Oct.1988)

## Warranty / Liability

The technical information contained in these specifications constitutes our current experience values. The purchaser is responsible to examine the products concerning special effects for the provided application.

## Durability of the Asphalt Art film

The durability depends on proper application, in particular of adequate pressure, the condition of the provided surface and the traffic of the street. There are many applications that are in place for more than a year but it depends on the particular place and surface usage where Asphalt Art is applied.



**815-322-5299**  
**www.asphaltart.com**



# Asphalt Art® Application Instructions

## Installation Guide

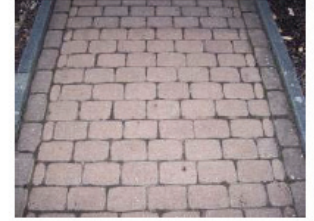
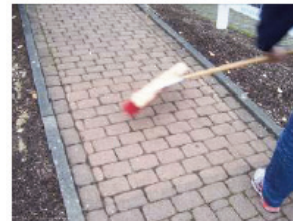
1. Pre-treat the area with a gas burner in case of humidity and frost
2. Remove loose dirt before application from the surface
3. Remove one small strip of liner from the surface
4. Orient the Asphalt Art film, apply the exposed edge and remove the liner gently
5. Adjust small applications by hand and/or
6. Roll up and down the film slowly, several times with a small hand roller
7. Or use a soft roller that we also offer for larger applications

The Asphalt Art adhesive has to be activated through pressure to ensure adequate adhesion to the ground. Be sure to apply roller pressure to all areas and angles of the print/application surface.

## Removal of the used Asphalt Art

Asphalt Art is usually very easy to remove. It is usually removed in one piece from the asphalt or stone. However, surfaces react differently especially in combination with various the climates – so you may find that on certain surfaces – some adhesive residue may be left on the ground. So please follow these steps to avoid any issues when you want to remove the product.

- Remove the Asphalt Art film from the surface by lifting up at one edge and then pulling it back slowly.
- Often times it is removable in one piece. If you find residue on the asphalt, there are different ways to proceed:
- Heat up the Asphalt Art with the gas flame. Most of the time this process will help release the adhesive on the Asphalt and improve the Asphalt Art aluminium surface.
- You may also remove the Asphalt Art foil from the asphalt and burn some remaining adhesive with the gas flame. Please be extremely careful as you may cause some damage to the asphalt surface if you heat it up too much.
- Adhesive removal can be done with mineral spirits or most any other cleaning aid for adhesives.



## Removal

815-322-5299  
[www.asphaltart.com](http://www.asphaltart.com)



To order call:  
(800)552-9427  
[www.qmls.com](http://www.qmls.com)